



WELCOME!

WHAT HAPPENS TO MY SAMPLE?



United Nations
Educational, Scientific and
Cultural Organization

Anti-doping
Convention

#KEEPINGSPOORTREAL



#KEEPINGSPO



#KEEPINGSPO



#KEEPING



GSPOR

TREAL



#KEEP



#KEEPINGSPO



Security

Participants 1

Chat

Share Screen

Record

Reactions

Interpretation

Off

EN English

FR French

RU Russian

✓ ES Spanish

AR Arabic

Mute Original Audio



Interpretation

BY ATHLETES FOR ATHLETES: THE ITA CONTINUES TO RAISE CLEAN SPORT AWARENESS IN 2022 WITH THE PUBLIC MONTHLY WEBINAR SERIES



#KEEPINGSPOREAL



FAIRNESS

RESPECT

INTEGRITY



Chat

Q&A

Questions & Answers

INFORMED SPORT

PRESENTING PARTNER



SPORT



sport.wetestyoutrust.com

**GLOBAL TESTING AND CERTIFICATION PROGRAM
FOR SPORTS AND NUTRITIONAL SUPPLEMENTS**

**THIS WEBINAR IS DELIVERED WITH
THE SUPPORT OF THE UNESCO
INTERNATIONAL CONVENTION
AGAINST DOPING IN SPORT**



United Nations
Educational, Scientific and
Cultural Organization



Anti-doping
Convention

WHAT HAPPENS TO MY SAMPLE?

PANELLISTS



Tiia Kuuranne, PhD

Laboratory Director, Swiss
Laboratory for Doping Analyses



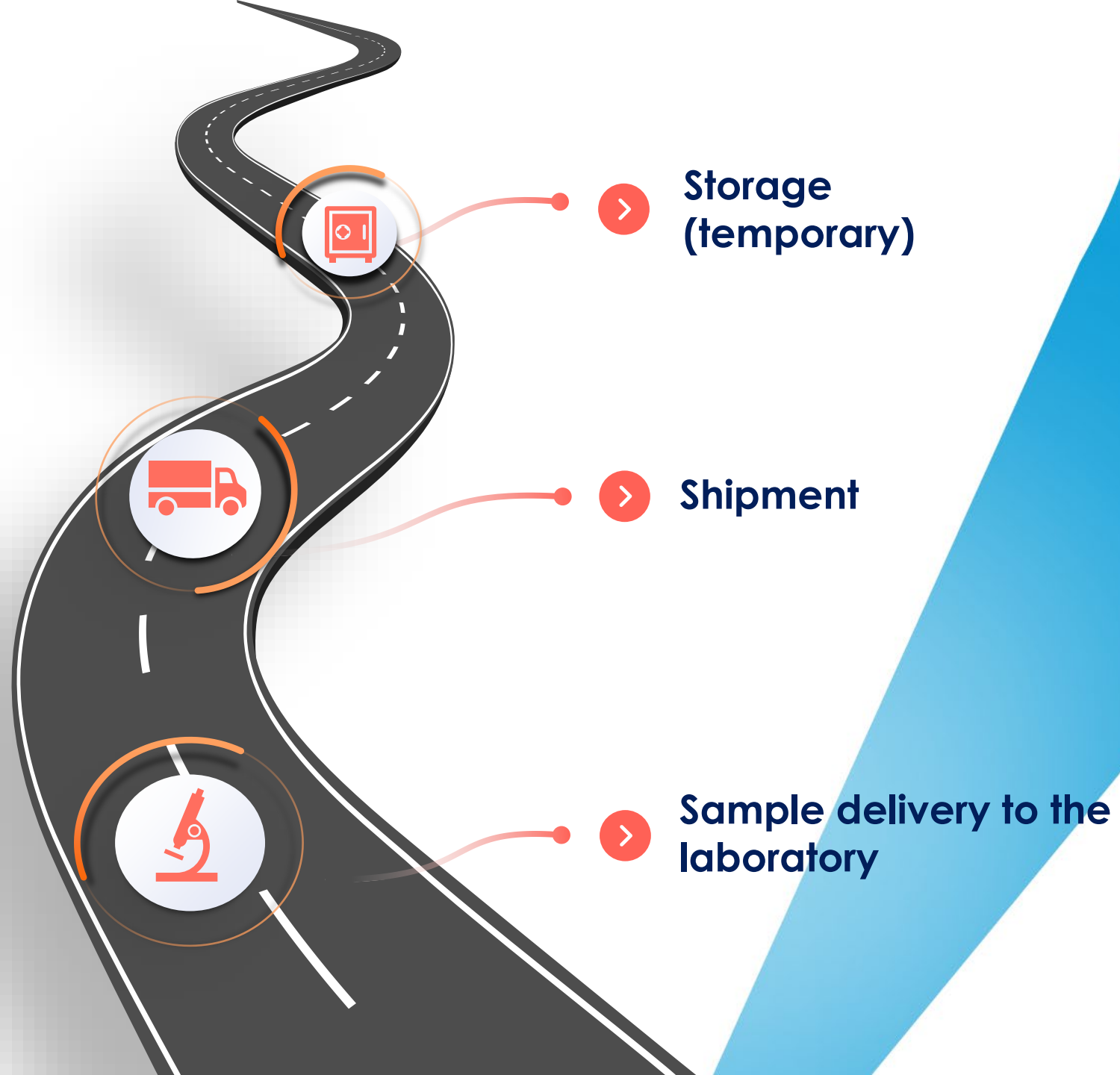
Neil Robinson, PhD

ITA Head of Science & Medical

DOPING CONTROL PROCESS (DCP)



CHAIN OF CUSTODY



POLL QUESTION

WHICH OF THE FOLLOWING SAMPLE COLLECTION TYPES CAN AN ATHLETE BE ASKED FOR? (Multiple choice)

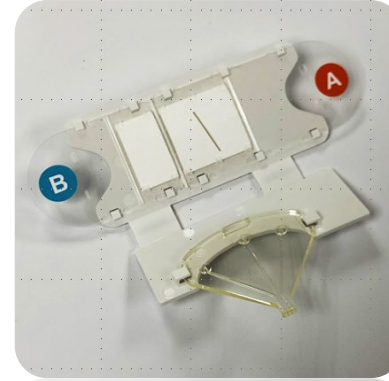
- Urine
- Throat swab
- Saliva
- DBS (Dried Blood Spot)
- Blood
- Stool

SAMPLE TYPES

Urine



DBS (Dried Plasma Spot)



Blood (serum/EDTA/plasma)



SAMPLE TYPES



Hair



Saliva



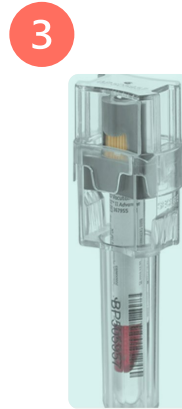
Throat swab



Stool



ANTI-DOPING SECURITY KITS

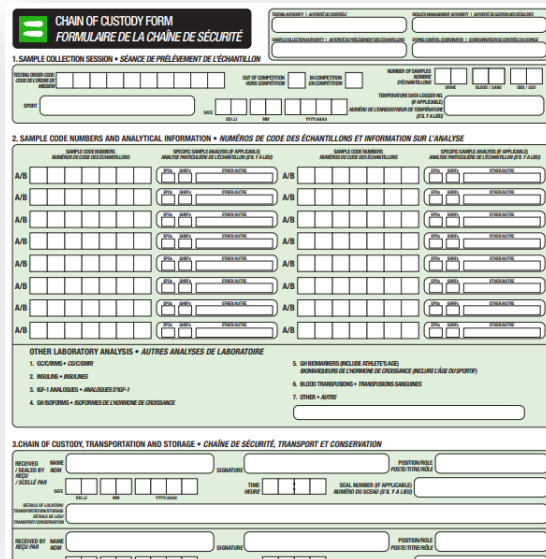




TEMPORARY STORAGE - DOCUMENTATION

- ✓ The sample is stored in a secured room.
- ✓ This step is documented on the Chain of custody (CoC) form.

Chain of Custody (CoC) form



CHAIN OF CUSTODY FORM
FORMULAIRE DE LA CHAÎNE DE SÉCURITÉ

1. SAMPLE COLLECTION SESSION • SÉANCE DE PRÉLÈVEMENT DE L'ÉCHANTILLON

2. SAMPLE CODE NUMBERS AND ANALYTICAL INFORMATION • NUMÉROS DE CODE DES ÉCHANTILLONS ET INFORMATION SUR L'ANALYSE

SAMPLE CODE NUMBER / NUMÉRO DU CODE DE L'ÉCHANTILLON	ANALYTICAL INFORMATION / INFORMATION ANALYTIQUE	SAMPLE CODE NUMBER / NUMÉRO DU CODE DE L'ÉCHANTILLON	ANALYTICAL INFORMATION / INFORMATION ANALYTIQUE
A/B		A/B	
A/B		A/B	
A/B		A/B	
A/B		A/B	
A/B		A/B	
A/B		A/B	
A/B		A/B	
A/B		A/B	

OTHER LABORATORY ANALYSIS • AUTRES ANALYSES DE LABORATOIRE

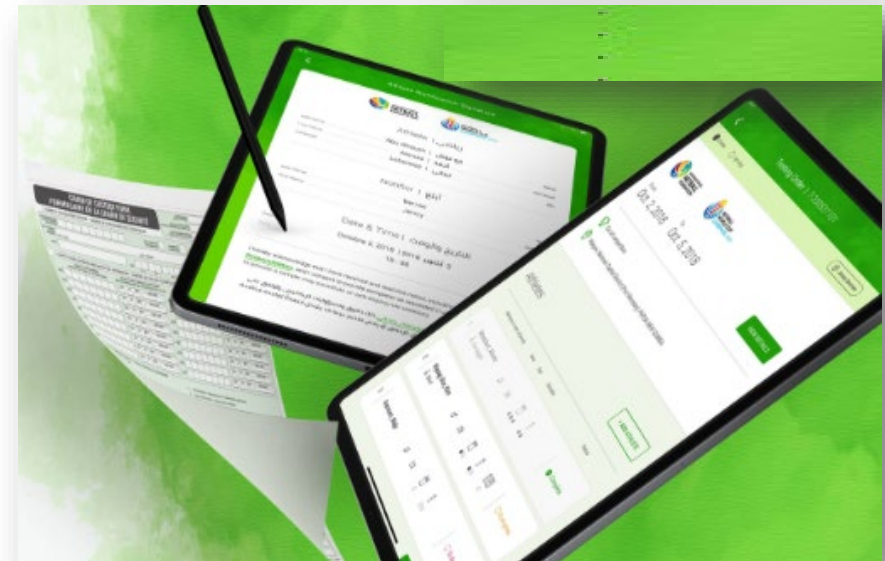
1. SQUID • CECIDY	5. DRUGS/TOXINS (INCLUDE QUALITY) / MÉDICAMENTS DE CROISSANCE (INCLURE L'ÂGE DU SPORTIF)
2. BLOOD • SANG	6. BLOOD TRANSFUSIONS • TRANSFUSIONS SANGUINES
3. HEP-1 ANALYSES • ANALYSES D'HEP-1	7. OTHER • AUTRE
4. UR BIOPHARM • BIOPHARMES DE CROISSANCE	

3. CHAIN OF CUSTODY, TRANSPORTATION AND STORAGE • CHAÎNE DE SÉCURITÉ, TRANSPORT ET CONSERVATION

RECEIVED BY / REÇU PAR: [Signature] DATE: [Date] TIME: [Time] REAL NUMBER OF APPLICABLES / NUMÉRO RÉEL DES APPLICABLES: [Number]

RECEIVED BY / REÇU PAR: [Signature] DATE: [Date] TIME: [Time] REAL NUMBER OF APPLICABLES / NUMÉRO RÉEL DES APPLICABLES: [Number]

Paperless





TEMPORARY STORAGE – TRANSPORT BAGS

Cupboard



Safe



Temperature controlled
Transport bag – multiple use



Transport bag



Temperature controlled Transport bag – single use



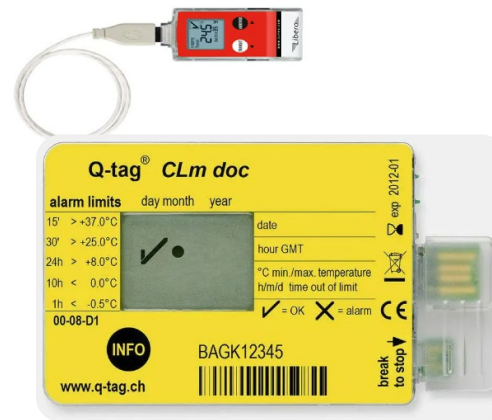


SHIPMENT AND TEMPERATURE CONDITIONS

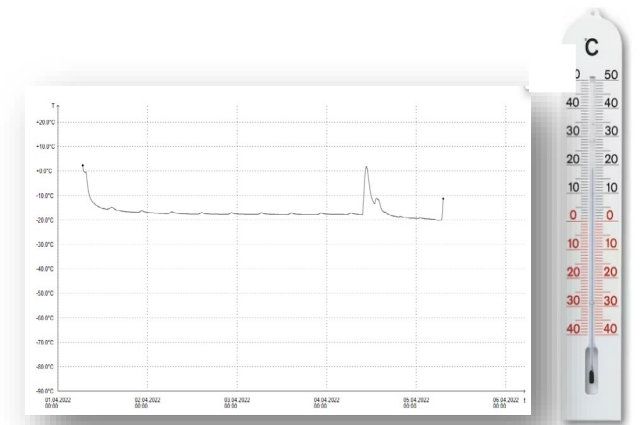
- ✓ The sample is either brought to the laboratory by the Doping Control Officer himself or shipped with a courier company.
- ✓ The shipment is documented on the CoC and/or on the tracking system of the courier company.



Samples delivered by courier



Various temperature monitors (dataloggers)



Temperature report (time and temperature – BSS)



SAMPLE DELIVERY TO THE LAB



- ✓ The lab personal checks the integrity of the sample.
- ✓ The lab personal checks the documentation (Doping Control Form, CoC, shipment documentation, the temperature conditions).
- ✓ All info listed above is registered into the LIMS (Laboratory Information Management System).

SECURITY MEASURES



Keep the samples under surveillance



If unattended, lock the storage room/cupboard



Keep the samples under surveillance



Various seals used to seal boxes/transportation bags

LABORATORY WORK CONTEXT

- ✓ **Various operators in anti-doping**

WADA: Development, harmonisation and coordination of rules and policies
Testing, sample collection and result management authorities
Laboratory and its independence



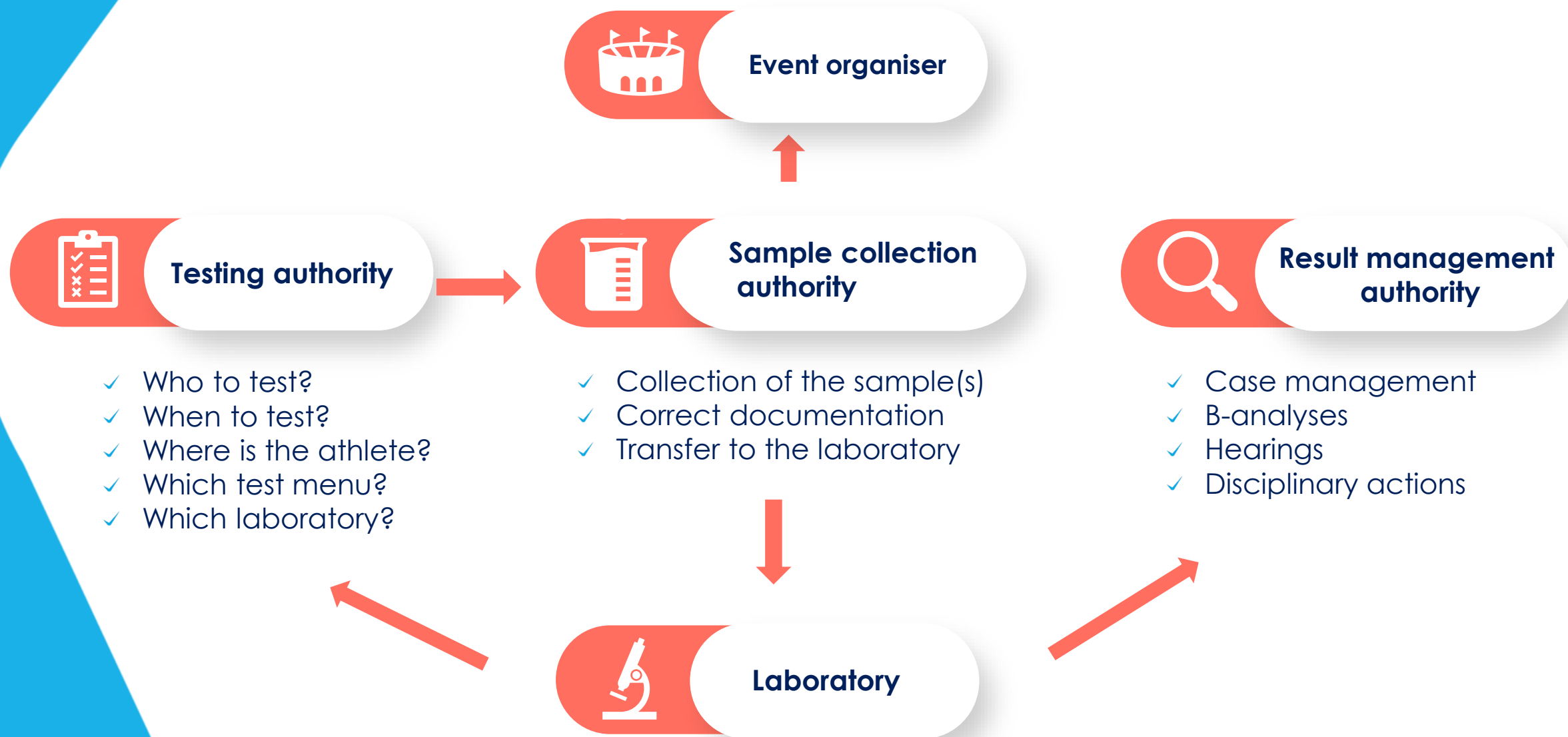
- ✓ **Routine analysis of anti-doping samples**

Prohibited substances in sport
Various matrices (urine, blood, DBS)
Analytical procedures and harmonisation

- ✓ **Result interpretation and reporting**

Additional analytical measures, precautions and studies
Adverse Analytical Finding vs. Anti-Doping Rule Violation

LABORATORY INDEPENDENCE



POLL QUESTION

HOW MANY WADA ACCREDITED LABORATORIES ARE THERE AS OF TODAY? (Single choice)

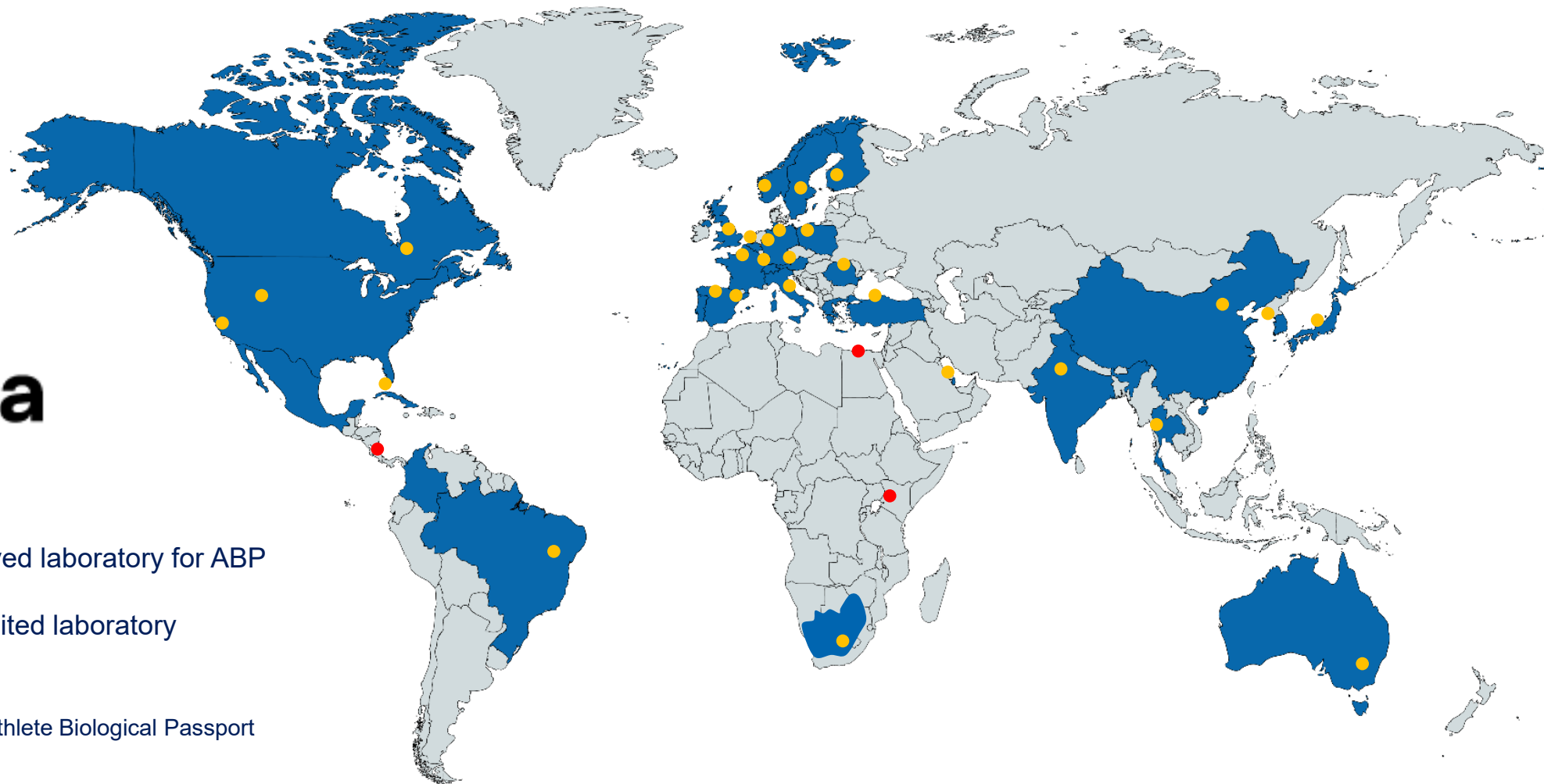
- 5
- 30
- 47
- 89

WADA ACCREDITED LABORATORIES



- Approved laboratory for ABP
- Accredited laboratory

ABP- Athlete Biological Passport

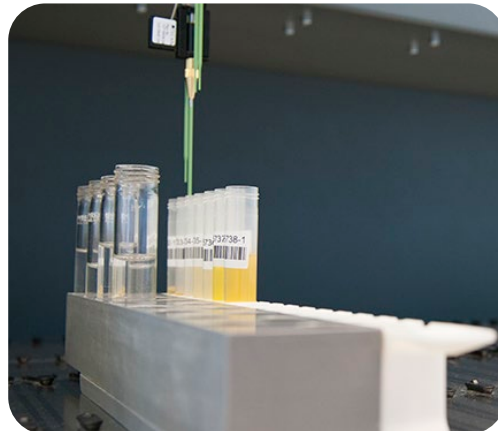


PRE-ANALYTICAL PROCESS

1

Sample A

Opening and distribution



2

Sample B

Storage



PRE-ANALYTICAL PROCESS

3

A

Initial testing procedure

PAAF or Negative



3

B

Confirmation procedure

AAF or Negative



4

Reporting

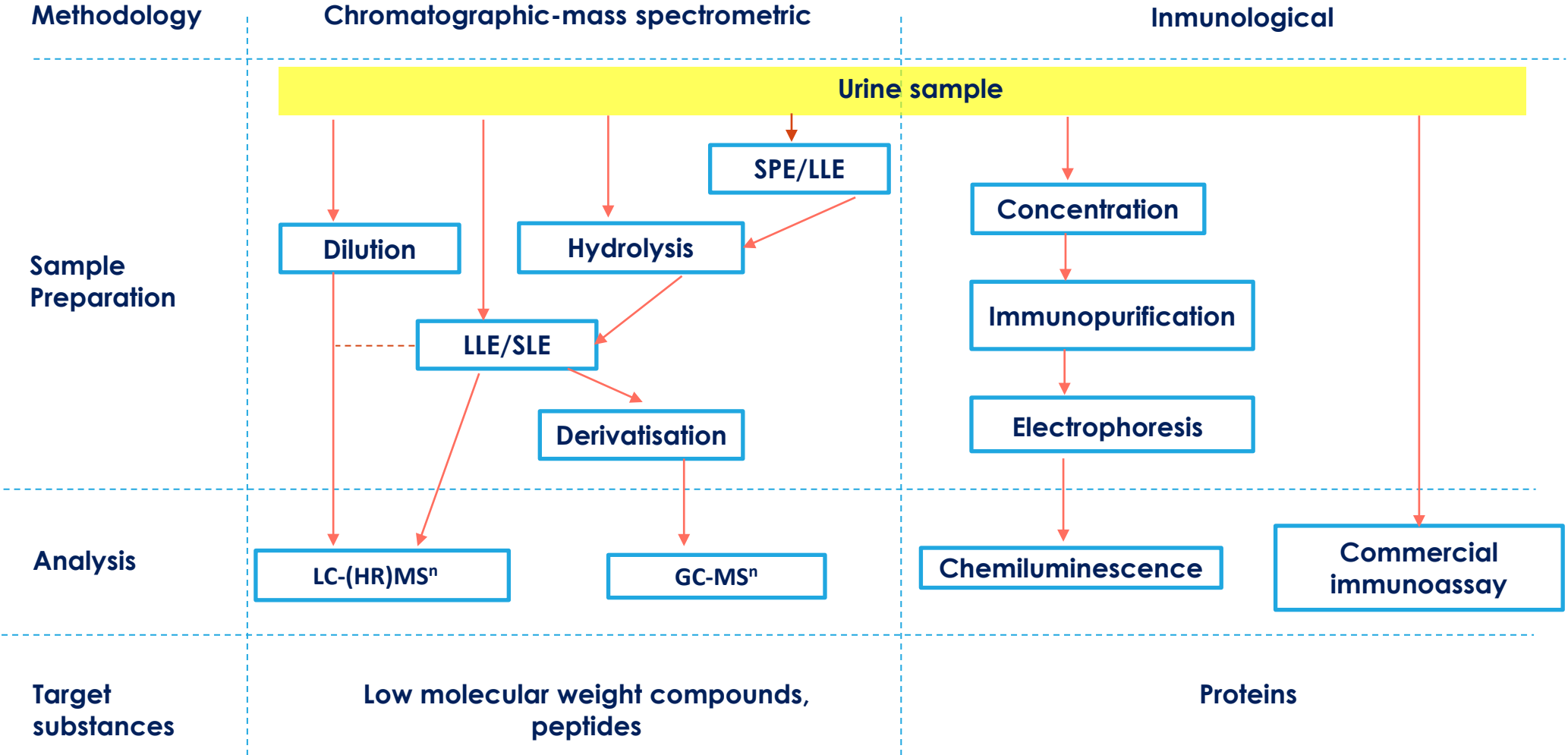


5

Results management



SCREENING PROCEDURES – FEW TESTS, WIDE COVERAGE





RESOURCES

RESOURCES

Video tutorials and webinars:

- ✓ [ITA Webinar - DC Webinar](#)
- ✓ [ITA Webinar - Results Management Webinar](#)
- ✓ [ITA Webinar- Innovation in Anti-Doping](#)
- ✓ [Inside The Anti-Doping Lab – YouTube](#)

WADA resources:

- ✓ [List of WADA Accredited Laboratories](#)
- ✓ [List of ABP Laboratories](#)
- ✓ [International Standard for Results Management](#)
- ✓ [International Standard for Laboratories](#)

Relevant Articles:

- ✓ [The analytical challenges of anti-doping analysis](#)
- ✓ [Olympic anti-doping laboratory: the analytical technological road from 2016 Rio De Janeiro to 2021 Tokyo](#)
- ✓ [Detection of SARMs in doping control analysis](#)
- ✓ [Preparation and accreditation of anti-doping laboratories for the Olympic Games](#)
- ✓ [Ensuring high quality in anti-doping laboratories](#)



Q&A

MORE QUESTIONS?

education@ita.sport

WEBSITE: ita.sport



International Testing Agency



@IntTestAgency



International Testing Agency

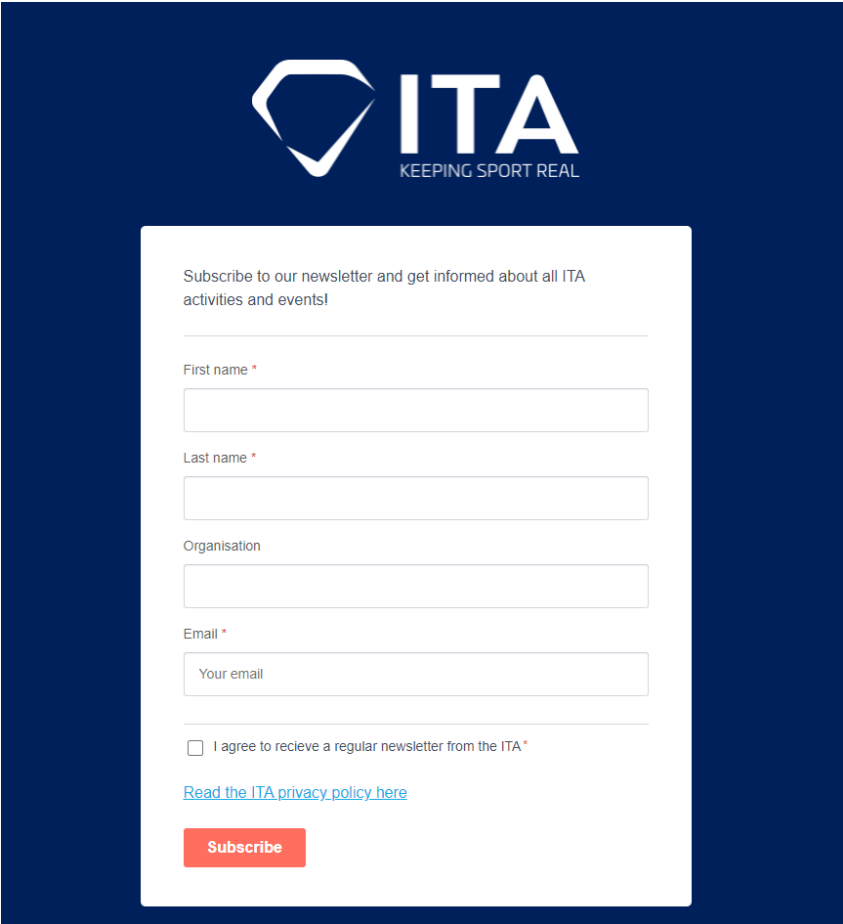


@internationaltestingagency



International Testing Agency

LATEST FROM THE ITA IN YOUR INBOX



The screenshot shows a dark blue background with the ITA logo at the top left. The logo consists of a white diamond shape with a blue checkmark inside, followed by the text "ITA" in a large, bold, white sans-serif font, and "KEEPING SPORT REAL" in a smaller, white sans-serif font below it. Below the logo is a white rectangular form with the following elements: a heading "Subscribe to our newsletter and get informed about all ITA activities and events!", a "First name *" field, a "Last name *" field, an "Organisation" field, an "Email *" field with the placeholder text "Your email", a checkbox labeled "I agree to receive a regular newsletter from the ITA *", a blue link "Read the ITA privacy policy here", and a red "Subscribe" button.

Subscribe [here](#) to receive information about upcoming webinars and the latest ITA news.



SCAN TO SIGN UP